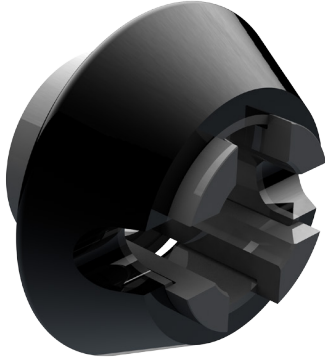




# MAGNUM TOOL PUSHER™



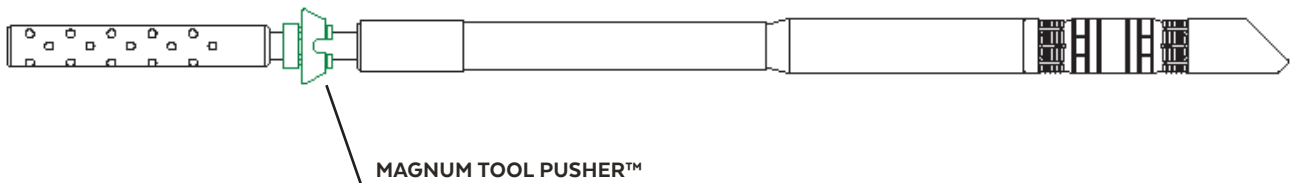
## INNOVATION REVEALED

The Tool Pusher™ is a simple solution to an ever increasing problem. In today's times where lateral sections are getting longer by the project, wireline pumpdown efficiency has suffered. This innovative product reduces fluid bypass area around the bottomhole assembly using a decades old, field proven swab design without interfering with conduction signal or adding length to the toolstring. By decreasing water consumption and increasing run in hole tension, wireline pumpdown can now achieve levels of efficiency that were previously written off to history.

## FEATURES

- Non BHA interfering design
- No moving parts
- No risk of product loss downhole
- Universal BHA size design
- Compatible with existing quick change/plug & shoot connection subs
- Less than 1 minute redressable/interchangeable
- Designed with adequate fluid bypass channels to prevent a swabbing effect while pulling out of hole.
- Custom sizes available upon request

## BOTTOM HOLE ASSEMBLY



For more information, and to find a representative near you, visit [www.magnumoiltools.com](http://www.magnumoiltools.com).

Copyright © 2019 Magnum Oil Tools International, Ltd. All Rights Reserved.

REV - January 2, 2019 1:54 PM

This presentation contains proprietary and/or confidential information that is the exclusive and sole property of Magnum Oil Tools International, Ltd. The presentation also includes information that contains intellectual property rights owned by and/or assigned to Magnum Oil Tools International, Ltd. The information from the presentation shall not be disclosed to any third party without express written consent from Magnum Oil Tools International, Ltd. prior to disclosure.