

MILL E-Z™

WIRELINE SET COMPOSITE CEMENT RETAINER WITH SLIDING SLEEVE CHECK VALVE

INNOVATION REVEALED

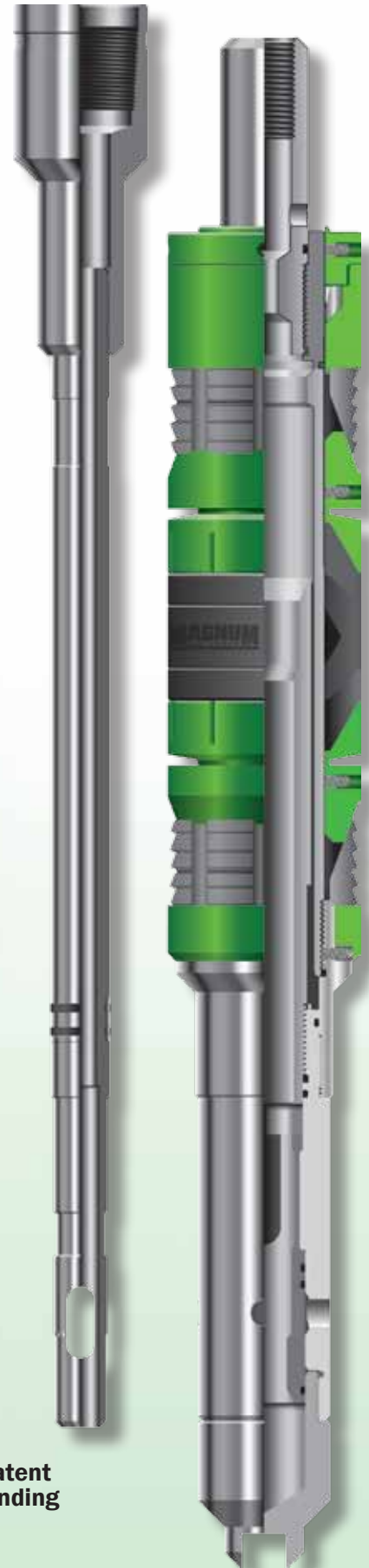
The **Mill E-Z™ Wireline Set Cement Retainer** is a slim composite retainer with a built-in sliding sleeve check valve, set like a conventional bridge plug, and is used for remedial cementing or zone abandonment. The sliding sleeve check valve is operated by a stinger seal assembly from the surface. Because of its low metallic content, the Mill E-Z™ Wireline Cement Retainer can be quickly and easily milled and circulated back to surface using conventional milling, drilling with a rig and tubing, or with coiled tubing.

FEATURES

- Consistent drill times of 30 minutes or less
- Can be set on wireline or coiled tubing using conventional setting tools
- Can be milled or drilled with coiled tubing or a rig
- Positive seal after setting
- Millable cast iron slips
- High differential pressure rating
- Low temp and high temp materials conducive to a wide range of environments
- Patented precision shearing device
- Mill E-Z™ is set via a universal setting sleeve and adapter.
- Simple valve control by surface pressure manipulation

OPERATIONS

Once the Mill E-Z™ Wireline Set Cement Retainer is set and a Magnum Stinger is attached to the tubing string, the stinger is run to a depth just above the cement retainer. The stinger is then inserted into the plug bore and seals against the mandrel I.D. to isolate the tubing from the annulus. Once the tubing is set down slowly and pressure applied, communication is allowed to the well bore beneath the composite cement retainer



Patent Pending

MILL E-Z™

WIRELINE SET CEMENT RETAINER
WITH SLIDING SLEEVE CHECK VALVE

CONTINUED

CASING SPECS		PLUG SPECS				OPERATING RANGES			
CASING O.D. inch (mm)	WEIGHT RANGE lb/ft (kg/m)	MAX O.D. inch (mm)	MIN I.D. inch (mm)	PLUG LENGTH inch (mm)	SETTING TOOL	LOW TEMP HI PSI	LOW TEMP HI PSI	MID TEMP HI PSI	HI TEMP HI PSI
4 (101.6)	9.50-11.00 (14.1-16.4)	3.188 (81.0)	Specs Being Updated		Magnum "A-1", Baker #10 or Owen	250°F 8,000PSI (121°C) (55.2MPa)	250°F 10,000PSI (121°C) (68.9MPa)	300°F 10,000PSI (149°C) (68.9MPa)	400°F 10,000PSI (204°C) (68.9MPa)
4-1/2 (114.3)	15.1-17.1 (22.5-25.4)	3.440 (87.4)							
	9.5-13.5 (14.1-20.1)	3.570 (90.7)							
5 (127.0)	11.5-18.00 (17.1-26.8)	3.920 (99.6)							
5-1/2 (139.7)	15.50-23.00 (23.1-34.2)	4.300 (109.2)			Magnum "A-1", Baker #20 or Owen	Green Composite/ HSN Elastomer	Yellow Composite/ HSN Elastomer	Blue Composite/ HSN Elastomer	Blue Composite/ HSN Elastomer
	14.0 (20.8)	4.600 (116.8)							
7 (177.8)	23.00-32.00 (34.2-47.6)	5.750 (146.1)							
	17.00-20.00 (25.3-29.8)	5.950 (151.1)							
7-5/8 (193.7)	24.00-33.70 (35.7-50.1)	6.250 (158.8)							